



## Chip On Data Extraction Device

Extract data from eMMC chips without soldering or desoldering

Non-destructive

No consumables

1. Mount board in the CODED frame
2. Follow the instructions to position the spring tip probe arms
3. Connect by USB and image the device
4. Run TomTology2
5. Return a working device

All TomTom pinout points and dismantling videos can be provided, just follow the instructions

All required equipment provided and bundled in a Peli Case

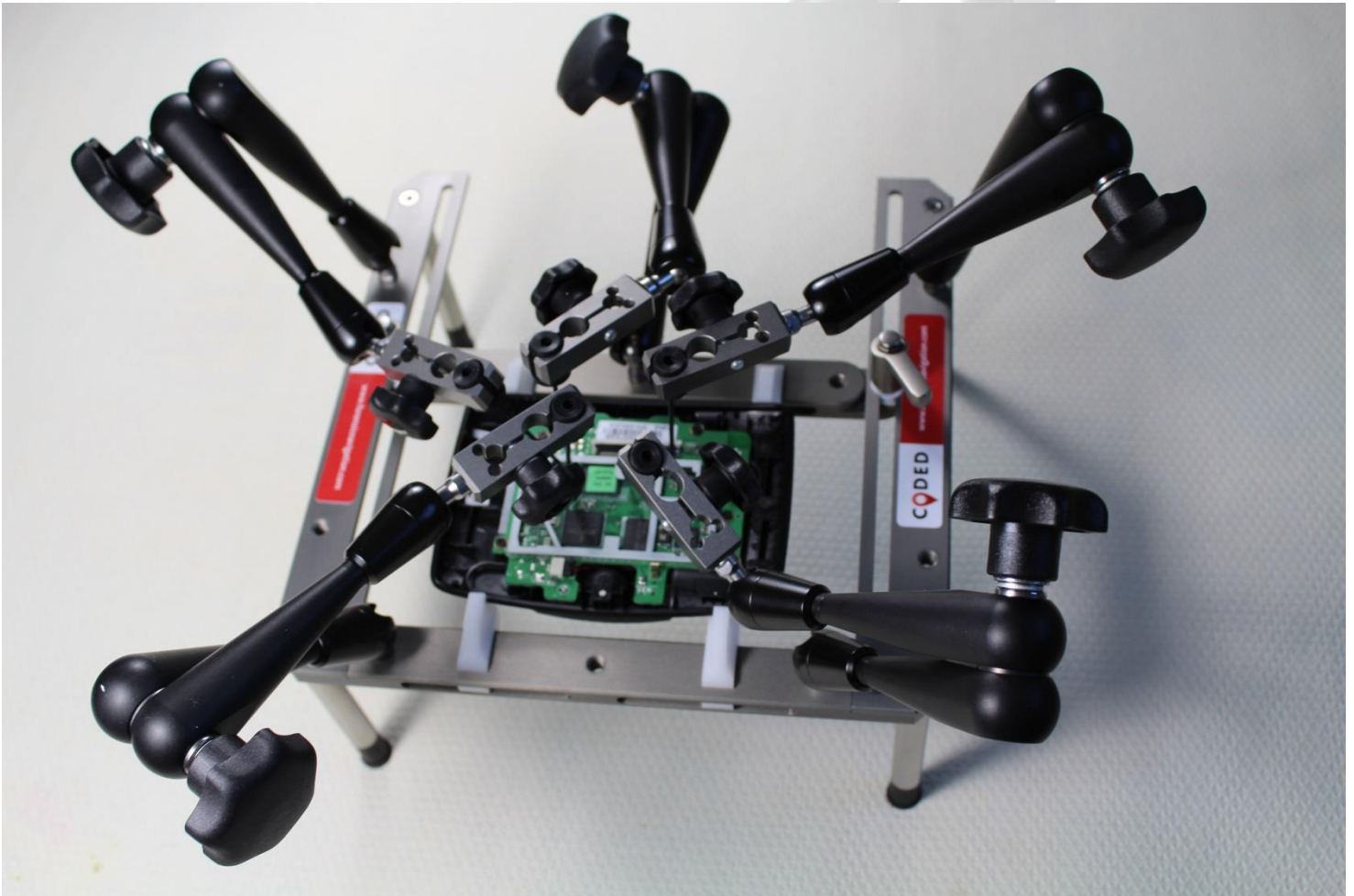
Hands on training package available

Supports other eMMC based devices, not just TomToms

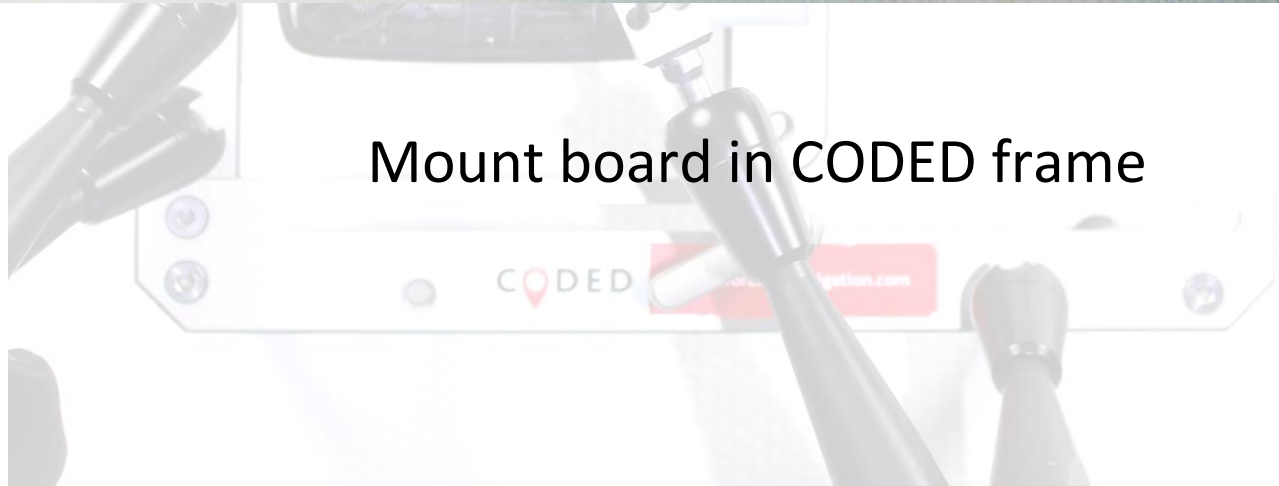
Visit [www.forensicnavigation.com](http://www.forensicnavigation.com) for more information and pricing



## Chip On Data Extraction Device

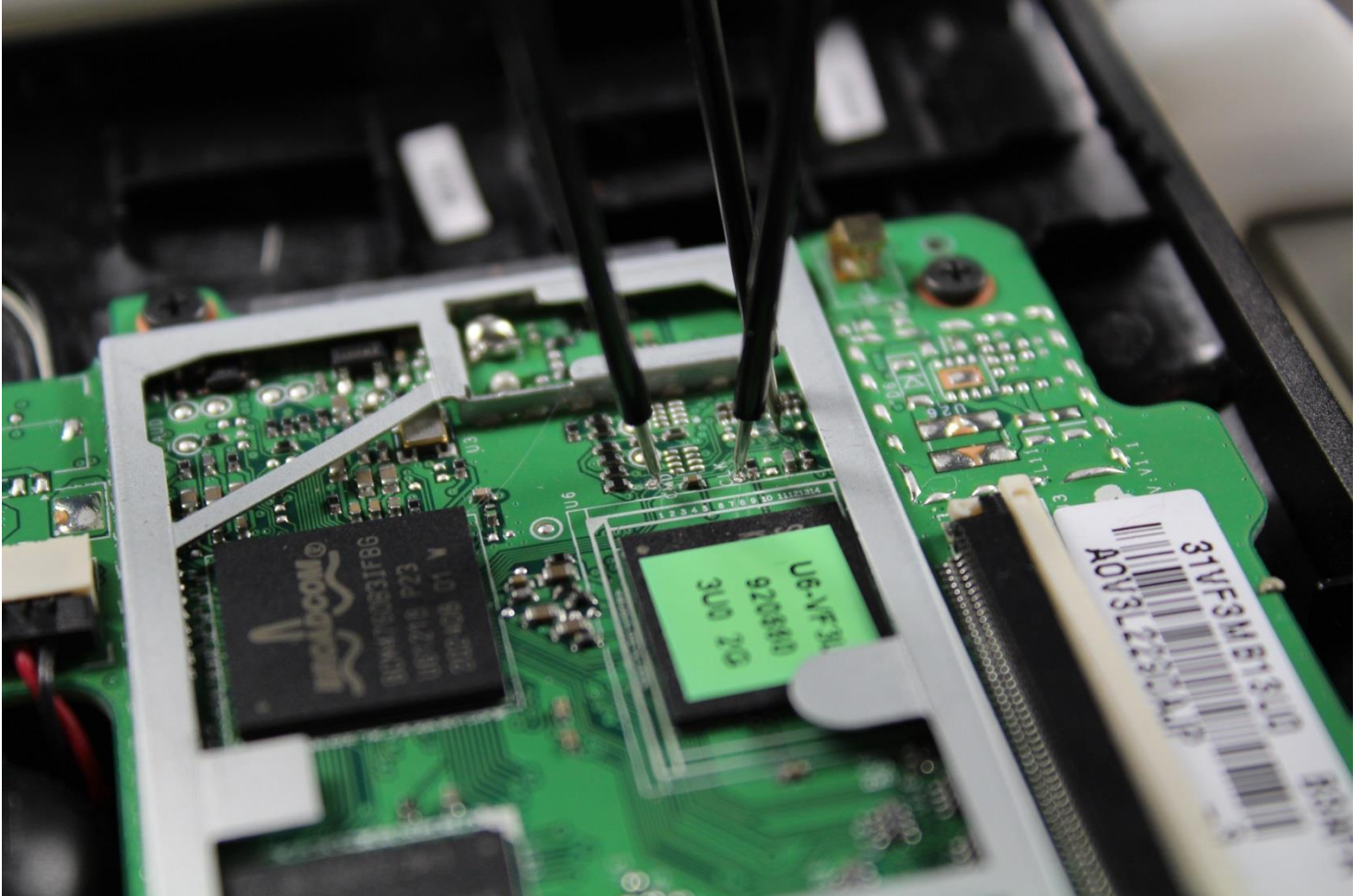


Mount board in CODED frame





## Chip On Data Extraction Device



Connect to Pin Out Points then  
connect to MMC Reader.

No soldering!

# C O D E D

Chip On Data Extraction Device



Supplied in Peli Case with all  
required equipment